



## **2008 – 2009 Christian Education Programs**

Our vision and mission come from the life, death, and resurrection of Jesus Christ as reflected in the Scriptures.

With God's Grace,

- We shall strengthen ourselves as God's people through worship, teaching, learning, and sharing the journey of faith.
- We shall seek to show Christ's love by serving, individually and collectively, to meet the spiritual and physical needs of our brothers and sisters.
- We shall accept the dynamic nature of the Christian faith and strive to grow in it.

**First Presbyterian Church, Greenville  
1400 South Elm Street  
Greenville, NC 27858-3746  
(252) 758 – 1901  
[www.fpcgreenville.org](http://www.fpcgreenville.org)**

***Share the Journey; Grow in Faith***

## **Meet Our Staff**



*Wanda Neely, Pastor, x201*



*Bill Neely, Pastor, x202*



*Kerri Mock Hefner, Associate Pastor for Campus Ministry and Mission, x203*



*David Roberts, Director of Ministries to Youth and Their Families, x205*



*Sung Hee Chang, Director of Christian Education, x204*



*Bill Wood, Director of Music, x206*



*Melissa Feller, Director of Youth/Children's Music,  
[melissajfeller@embarqmail.com](mailto:melissajfeller@embarqmail.com), 252-758-3372*

## **Our Prayer For First Presbyterian Church**

It is our prayer at First Presbyterian Church that every member and visitor find a Sunday School class best suited for your individual and spiritual desires and needs.

If you and your family need assistance finding the classes best suited for you, or you have questions about Christian education programs, please contact our staff, or any church member. May God guide you as you:

*Share the Journey and Grow in Faith!*

---

**Sunday School Hour  
9:45 a.m. to 10:45 a.m.**

### **Sunday School Superintendents**

Jane Alexander (Children)

Elaine Nagy (Youth)

Becky Stasavich (Adult)

### **Associate Superintendent**

Anne May

# **ADULT SUNDAY SCHOOL**

## **IT ISN'T JUST FOR KIDS!**



**The Covenant Class: Room 224, Second Floor**

**The First Sunday Class: Room 133, Ground Floor**

**The Foundations Class: Room 110, Ground Floor**

**Special Issues in Faith Class: Room 211, Second Floor**

**The Harvey Webb Class: Room 216, Second Floor**

**The New Wine Class: Room 205, Second Floor**

**The Potter's Clay Class: Room 207, Second Floor**

**The Westminster Class: Room 202, Second Floor**

### **WEEKLY BIBLE STUDIES**

**Wednesdays: 6:30 p.m. – 7:30 p.m. (during JAM), Church Parlor**

**Thursdays: 10:00 a.m. – 11:00 a.m., Church Parlor**

## THE COVENANT CLASS: Room 224

**CONTACTS:** Becky Stasavich, 252•752•7016 (bastas1980@suddenlink.net)  
Peggy Barnes, 252•756•2470 (pegbarnes18@yahoo.com)  
Lynne Marks, 252•756•9471 (lgmarks@suddenlink.net)

**TEACHERS:** Jane Alexander, Peggy Barnes, Madge Chamness, Bill Cobb, Dick Marks, Lynne Marks, Melissa Nasea, Becky Stasavich, Peggy Wood

**PARTICIPANTS:** Jane and Hugh Alexander, Betty Bailey, Peggy and Don Barnes, Shelley Basnight, Anita and Clay Britt, Clara Carr, Madge Chamness, Cecilia and Bill Cobb, Louise Congleton, Nelson Crisp, Martha Cunningham, Vernetta Dean, Mary and Denis Endres, Mickie Ezelle, Grace and George Fuller, Linda High, Hope and Bill Kraus, Alison and Bill Lehman, Genet Lilley, Katie and Van Madray, Rhea and Jim Markello, Lynne and Dick Marks, Kay and Malcolm McLeod, Melissa Nasea, Janice O'Rear, Linda Parham, Chris Riddle, Peggy and Ron Sessoms, Becky Stasavich, Kathy Taylor, Betty Thompson, Earl Trevathan, Liz Wilkerson, Peggy and Fred Wood

**PURPOSE:** To continue our education about God's relationship with us and our relationship with him through the study of scripture; to learn how to live as Christians in the 21<sup>st</sup> Century; and to serve our church and community.

### **CLASS DESCRIPTION:**

The Covenant Class began many years ago as a young couples class and over the years has "warped" into couples and singles of all ages. While we are serious Bible students, we don't take ourselves too seriously. We share teaching responsibilities, but don't pressure any who prefer to respond rather than lead. We enjoy social occasions throughout the year. For many years, we served supper at the Greenville Community Shelter on the 4<sup>th</sup> Saturday of every month and continue to do so as a class at least once a year. We've also served supper to our Campus Ministry group. Members have donated time and money to FPC's Boys and Girls Camps and helped Habitat for Humanity. We've been actively involved in MayFest each year. We welcome others who enjoy good fellowship, serious Bible study and serving our community to join us.

### **TOPICS STUDIED/CURRICULUM USED:**

We have completed studies of various books from the Old and New Testaments as well as studied secular books such as *Genesis of Justice* by Alan Dershowitz. This fall we will complete a 7-week study on Religion and Politics in America beginning with a history of the relationship between religion and politics in our country followed by discussions of five essays related to the topic. The authors include John Danforth (Republican Senator from MO, ordained Episcopal priest), Ron Sider (founder, president of Evangelicals for Social Action), Barack Obama (Democratic Senator from IL, presidential candidate, essay from Nov 2006 issue of *Sojourners*), Tony Campolo (former college prof., founder of Evangelical Association for the Promotion of Education, author of 34 books), Marian Wright Edelman (founder, president of Children's Defense Fund, essay based on speech given to National Baptist Convention in Jan. 2005). We also will complete a special four-week Advent study beginning November 30, the first Sunday in Advent. Most of our studies this year will be from *The Thoughtful Christian*, an on-line publishing company featuring many Presbyterian scholars.

## **THE FOUNDATIONS CLASS: Room 110**

**CONTACTS:** Sarah Adams, 252•353•1774 (adamss.hms@pitt.k12.nc.us)  
Kathy Howard, 252•353•5216 (kathyhoward915@yahoo.com)

**TEACHERS:** Couples or individuals take turns leading the class.

**PARTICIPANTS:** Sarah and Todd Adams, Jessica and Matt Davenport, Diana and Ron Denham, Koryn and Brian Dilday, Alisa and Todd Fraley, Ashley and Jason Hardee, Kathy and Rob Howard, Kelly and Matt Robertson

**PURPOSE:** To provide fellowship and spiritual nourishment/rejuvenation for busy young families

### **CLASS DESCRIPTION:**

Membership in the Foundations Class is primarily, but not limited to, parents of young children. Curriculum focuses on the spiritual needs and concerns of modern young families. Class members volunteer to teach. Because we have young children to get ready for Sunday School and Worship, we begin our class at 10 a.m., rather than 9:45. The group enjoys a strong sense of fellowship and commitment to supporting each other as we strive to build strong Christian families. Membership is open to young adults who are or will be creating these kinds of Christian homes, whether or not they have children.

### **TOPICS STUDIED/CURRICULUM USED:**

Balancing spiritual life with “busy-ness” of everyday life. Family spirituality. Currently studying the book *This We Believe: Eight Truths Presbyterians Affirm*.

## **THE HARVEY–WEBB CLASS: Room 216**

**CONTACTS:** Bill James, 252•756•9922  
Jack Barnhill, 252•353•4015

**TEACHERS:** Bill Glidewell is one of the teacher-members of the class. Bill and Wanda Neely, Kerri Hefner, Bill Cobb, Tonita Branan, Tommy Pate and Becky Stasavich serve as guest teachers as needed.

**PARTICIPANTS:** Betty Ayers, Dorothy and Jack Barnhill, Doris Faulkner, Judy and Bill Glidewell, Bill James, Mary Jones, Jean and Bob Klein, Joanne and Bob Leith, Joyce Lewis, Nell and Fred Webb, Nina and Billy Weston, Billie Jean Trevathan-Wheeler, Walter Wheeler, Margaret Whitehurst, Sarah and Ed Whitehurst

**PURPOSE:** To study and reflect on weekly lessons from a Bible-based series using a study quarterly, *The Present Word*. Emphasis is on a review of the selected scripture and how the interpretation of it might relate to today's church and individual Christian living.

### **CLASS DESCRIPTION:**

The Harvey-Webb Class emphasizes Bible-based study using materials from a quarterly produced by International Sunday School Lessons. Scripture is read, reviewed, studied and then related to today's church and how we, as professing Christians, live out that scripture. Membership of the class is older adults, mostly, but not all of whom are retired. We begin each class with a devotional and by singing familiar hymns we love. We also enjoy several social get-togethers during the year. We always welcome members and visitors to share this Sunday morning hour with us.

### **TOPICS STUDIED/CURRICULUM USED:**

Currently, the class uses *The Present Word*, an adult Bible study quarterly from the International Sunday School Lessons program. The New Revised Standard Version (NRSV) of the Bible is used in this series. The quarterlies alternate between the Old and New Testaments. The class also uses a weekly Worship Leaflet that is coordinated with the day's lesson in the quarterly. It includes a Call to Worship, Confession, Scripture Reading, other materials.

## **ISSUES IN FAITH: PRE-ELECTION CLASS: Room 211**

**CONTACT:** Kerri Hefner 252-758-1901, x203 (hefnerk@ecu.edu)

What does your faith have to do with politics? Everything! Join a special class that will meet for 8 weeks (beginning 9/7/08) before the November election. We will read the book *Jesus for President* by Shaine Claiborne and Chris Haw, and discuss how the pew meets the voting booth.

## **THE NEW WINE CLASS: Room 205**

**CONTACTS:** Mary Jon Pabst, 252•756•5718 (mjpir8@aol.com)  
Wilma Shackelford, 252•756•6636 (wshackelford1@suddenlink.net)

**TEACHERS:** Emily Coffman, Jayne/Glen Fisher, Edwina Gower, Jennifer Little, Mark/Mary Jon Pabst

**PARTICIPANTS:** Ward Bradshaw, Lisa Chappell, Emily and Bill Coffman, Jeff Elwell and Edwina Gower, Wendy Farrior, Jayne and Glen Fisher, Brenda Killingsworth, Jill Lineberry, Jennifer and Chip Little, Luann and Charles Manning, Marigail Matthijs, Debra and Kirk Mizelle, Elizabeth Montgomery, Joanna Myers, Mary Jon and Mark Pabst, Georganne and Derrick Perry, LuAnne and Mark Phillips, Wilma and Paul Shackelford, Elizabeth and Craig Stanley, Jane and Greg Steele, Kristie and Ron Wooten

**PURPOSE:** To discuss God's word and its relativity to issues in today's society; to assist in and encourage one's spiritual growth in a smaller informal setting; and, to provide Christian support to all, especially during difficult times.

### **CLASS DESCRIPTION:**

New Wine began approximately 12 years ago as a young couples and singles class. We have aged gracefully in the last 12 years and are currently comprised of couples with and without children. Class members have volunteered to facilitate our lessons with all participating in group discussion. Breakfast is always served and fellowship is abundant. In the past we have sponsored families at Christmas, participated in Relay for Life, served meals at the Greenville Community Shelter and donated time and money to Boys and Girls Camps. We offer love, support and encouragement to each other. If you would like more information about our class, contact Mary Jon or Wilma (see info above). We invite you to join us and look forward to seeing you.

### **TOPICS STUDIED/CURRICULUM USED:**

For fall 2008, we will be studying Exodus using the Kerygma series study. We have used the *Journey through the Bible* curriculum, completing the series from Genesis through Revelation. We have also completed *The Purpose Driven Life* study and *The Gospel According to Andy Griffith*.

## **THE POTTER'S CLAY CLASS: Room B117**

**CONTACT:** Tommy Pate, 252•355•2501 ([tpate@thejourneysgroup.com](mailto:tpate@thejourneysgroup.com))

**TEACHERS:** Tommy Pate and Tony Bell

**PARTICIPANTS:** Christine and Tony Bell, Lisa Burgwyn, Michelle Jones, Cynthia Harvey, Fran and Bobby Hutchison, Ginger and Tommy Pate

**PURPOSE:** Scripture-based Sunday School class with emphasis on discussion and class participation.

### **CLASS DESCRIPTION:**

The Potter's Clay Class is geared for adults who enjoy a Bible-based curriculum with an emphasis on discussion aimed at helping the members of the class grow in faith through sharing of beliefs and life experiences.

### **TOPICS STUDIED/CURRICULUM USED:**

We are taking a journey through the Bible using various curricula.

## **THE FIRST SUNDAY CLASS – Room 133 (Meets the first Sunday of every month)**

**LEADERS:** Bill Neely, Wanda Neely

**PARTICIPANTS:** Visitors, inquirers, new church members

**PURPOSE:** To provide an opportunity to meet with one of the pastors to learn about the spiritual disciplines of being a Christian and about following that calling at First Presbyterian Church. The class includes a church tour.

## **THE WESTMINSTER CLASS: Room 202**

**CONTACT:** Connie Bond, 252•752•8179 (cbond23@suddenlink.net)

**TEACHERS:** Ginny Hill, Willie Nelms

**PARTICIPANTS:** Betsy and Bill Baggett, Connie and Jimmy Bond, David Eggers, Kathy and Emmett Floyd, Cynthia and Tom Harvey, Ginny and Spencer Hill, Brenda and Grant Jarman, Charlotte and Willie Nelms, Pat and Harding Sugg, Jimmy Sutton, Ann and Dallas Taylor, Marcia Trevathan, Bob Woodside

**PURPOSE:** To come together and bond as a class while studying God's word; to help correlate God's word to current events; to help others in the community.

### **CLASS DESCRIPTION:**

"Young" older adults comprise the membership. Most are Empty-Nesters, although we have some still nurturing at home! Two leaders, as they prefer to be called, lead the weekly study. Our focus is on bringing the Bible into everyday situations and discussing how to face these situations in a way that God would have us respond. We like to help in the community by serving supper meals to guests of the Community Shelter, by serving supper meals to our Campus Ministry students, and by helping a needy family at Christmas. One of our favorite things to do is work at MayFest—a couple of our members are GREAT chefs who help prepare the Chicken Dinners. Each fall, we try to get together at the Bond's river cottage with a covered-dish dinner and "pickin' and singin'" as the highlight. If you're looking for a class with "class" plus food, fellowship, fun, and a love for the Lord, come join us!

### **TOPICS STUDIED/CURRICULUM USED:**

*The Present Word*, an adult Bible study quarterly from the International Sunday School Lessons, is our curriculum. The New Revised Standard Version (NRSV) of the Bible is used in this program. We also study timely topics such as current events and family values.

## CHILDREN AND YOUTH SUNDAY SCHOOL CLASSES AND WORSHIP OPPORTUNITIES



Children 2 years and older are invited to participate in a Sunday school class at 9:45 a.m. Following the "Time for Young Disciples" in the 11 a.m. service, children ages 4-7 (or 2nd grade) are invited to participate in "Godly Play" held in Room 113. The "Toddler's Church" is available for 2 and 3 year olds in Room 115. Older children are encouraged to participate in the worship service. A nursery for ages birth – 2 years is available starting at 8:30 a.m. on Sunday mornings.



Three youth Sunday School classes are offered, Mid Highs (6<sup>th</sup> – 7<sup>th</sup> grades), Crossings (8<sup>th</sup> grade and older completing confirmation), and Senior Highs (9<sup>th</sup> – 12<sup>th</sup> grades).

## CHILDREN'S CLASSES

**Nursery:** Room 117, Ground Floor  
Kim Recore, Amy Nugen

**2 Year Olds:** Room 119, Ground Floor  
Kathleen Randall (Lead Teacher), Kateri Norton, Kathryn Warren, C.J. Harrill

**3 to 4 Year Olds:** Room 115, Ground Floor  
Lisa Burgwyn, Wendy Goins, Jill Lineberry, & Ashley Rudolph

**K to 1st grade:** Room 116, Ground Floor  
Wendy Farring, Brenda Killingsworth, Luann Manning, & Marigail Matthijs

**2nd to 3rd grade:** Room 113, Ground Floor  
Krista Austin, Alisa Fraley, Edwina Gower, & Debra Mizelle

**4th to 5th grade:** Room B117, Lower Floor  
Mary Ann Leslie Cluck, Koryn Dilday, Elaine Nagy, & Kelly Robertson

**Wednesday JAM:**  
Kathy Floyd, Judy Wilson, C.J. Harrill, Kateri Norton, Nick Stutts, Amy Harman  
& Carolyn LeGrand

**Godly Play Teachers:**  
Sarah Adams, Jane Alexander, Kim Bell, Tonita Branan, Lisa Burgwyn, Luann  
Manning, Chris Riddle, Annelle West & Holli Williams

### ***New Sunday School Curriculum for Children 2008-2009***

*Walk With Me* - Published by Faith Alive Resources.

*Walk With Me* is produced in cooperation with The Reformed Church in America and with Presbyterians for Renewal. *Walk With Me* is built on a Biblical and Reformed understanding of God's Word.

## YOUTH CLASSES

**6th to 7th grade:** Room B120, Lower Floor  
Ward Bradshaw, Jayne Fisher, Georganne Perry, & Greg Steele

**8th grade (and higher in confirmation):** Room B122, Lower Floor  
David Roberts (assisted by pastors and elders)

**9th to 12th grade:** Room B102, Lower Floor  
Sonya Longest, Van Madray, Dan Mayo, & Paul Shackelford

## Other Programs and Activities for Children

**Advent Festival:** On the first Wednesday night of December, this family event provides children and their families a chance to participate in fun and meaningful crafts and events related to Advent and Christmas.

**Children's Choir:** FPC sponsors choir opportunities for children under the direction of Melissa Feller. Programs available include preschool choir (Ages 3-4) and elementary choir (K-5<sup>th</sup> Grade). These choirs meet as a part of Wednesday JAM. The choirs occasionally sing in Sunday worship. The Christmas musical will be the weekend of the Joy Gift Program, Dec. 13-14.

**Church Hour Activities for Children:** Children's Worksheets are available from the ushers. There are plans to expand this program to include a larger number of "quiet" activities for children remaining in the sanctuary during the worship hour.

- Children's Sermon-(A Time for Young Disciples) is held during the 11:00 worship service, led by church staff and lay volunteers.
- Toddler's Church (Room 115) is available for 2 and 3 year olds.
- Godly Play (Room 113), our newest program on Sunday mornings for children ages 4-7 meets in Room 113. Godly Play is a fun way of telling Bible stories and letting children respond creatively. A Godly Play session involves telling a Bible story using simple but beautifully carved wooden figures, a time for the children to reflect and comment on the story in a non-judgmental way, then a time for creative artwork. There are lots of 'I wonder' questions asked of the children and even to the teachers during Godly Play. The figures are organized by book and lesson to enhance understanding of the story.
- Third and Fourth Grade Worship Class meets one Sunday each month in Room B117 during the 11:00 a.m. worship service. This year's meetings are 9/28, 10/26, 11/23, 12/21, 1/25, 2/22, 3/22, & 4.26.

**Easter Egg Hunt:** The Easter Egg Hunt is sponsored by our Youth Connection for the younger members of FPC and takes place on the afternoon of Palm Sunday.

**Fall Festival:** The Fall Festival (10/29 this year) is one of the favorite activities sponsored annually by our Youth Connection. During this fund-raising event, children come with their friends and families to participate in an evening packed with good food, fun games, and costume contests. Funds raised during the event are used to sponsor the youth local Christmas mission projects.

**Splash:** A monthly newsletter is mailed to parents of children between birth and 36 months. To get your child on the mailing list, contact Tracy Wetherbee in the church office, 758-1901, x207, [tracywetherbee@embarqmail.com](mailto:tracywetherbee@embarqmail.com).

**Vacation Bible School:** During the summer children ages 3 through rising 6th grade participate in VBS held daily from 9:00 to 12:00 noon. This is a fun-filled week of activities and lessons that focus on themes from the Bible. VBS depends on youth and adult volunteers to provide food and supplies and to serve as teachers and assistants.

## Youth Ministry

**Confirmation:** Confirmation is an opportunity for youth to make a profession of faith and assume full responsibility in the congregation. Youth will ordinarily prepare confirmation through the Crossings Class during their 8<sup>th</sup> grade year. Older youth who have not confirmed their faith are also welcome to participate.

**Praise Band:** A Youth Praise Band meets weekly in the church Fellowship Hall under the direction of Melissa Feller. Members of the band participate in Youth Connection and various worship services throughout the year. For Fall 2008 practice will be Sundays, 4:00 – 5:00 p.m., Fellowship Hall.

**Scholarships:** Several college scholarship opportunities are available annually through the Presbytery and PW. Application information is available from the church office.

**Senior Recognition Sunday:** Graduating High School seniors are honored at the end of each school year. The church presents a study Bible to each graduate during worship, and graduates are honored with their families at a congregational luncheon.

**Ulster Project:** The Ulster Project is an exciting peace education project that brings Northern Ireland youth from both Catholic and Protestant backgrounds to our area to live in homes of host families representing Catholic and Protestant churches in our area. Typically the youth are between 14-16 years of age and are matched with youth of similar gender and age of our area. The project takes place during one month each summer. For more information, contact Jean Merenda, [jmerenda@suddenlink.net](mailto:jmerenda@suddenlink.net).

**Youth Connection – Mid Highs (6<sup>th</sup> – 8<sup>th</sup> grade) & Sr. Highs (9<sup>th</sup> – 12<sup>th</sup> grade):** FPC youth have an exciting youth fellowship program coordinated through the church's Education Ministry. Youth Fellowship activities are organized by a Youth Council that is composed of youth and adults. In addition to regular weekly fellowship (including supper) on Sunday evenings, Mid and Senior High youth participate in several special events, camps, retreats, mission projects, and volunteer opportunities throughout the year. Weekly activities are published in the church newsletter with information sent to the homes of the youth and their families. To be added to the Youth Connection email list contact David Roberts, [fpcyouthmin@gmail.com](mailto:fpcyouthmin@gmail.com).

**Youth Retreats:** Mid High and High School youth enjoy several weekend and week-long retreats throughout the year, including Don Lee, Camp Albemarle, Massanetta, and Montreat. These retreats are designed to provide youth a rich spiritual experience, where they can focus on growing in faith and fellowship away from the distractions of daily life. Check with the Youth Pastor for more information about individual retreats.

**Youth Sunday:** The church takes the gifts and talents of our young leaders seriously in worship throughout the year. On one Sunday each year, the youth conduct the entire worship services. They invite the congregation to turn their hearts toward God through drama, liturgical dance, prayer, Scripture reading, preaching, music, and other creative means. Participation is open to all youth of the church and requires weeks of planning and preparation.

## **Wednesday JAM**

12 weeks in the fall; 12 weeks in the spring

### **Welcome to Wednesday JAM (Jesus and Me)!**

First Presbyterian has Wednesday Night Programming for children, youth, and adults. The midweek program runs from 6:00 p.m. to 7:30 p.m. Children's activities include Bible study, book club, music, art, and fellowship dinner for all ages. Adult choices include Bible study, scrapbook club, prayer shawl ministry, prayers & squares, and library hour. The Wednesday night program co-directors are Brenda Killingsworth and Fran Hutchison.

### **SCHEDULE**

- 5:15 p.m.: Nursery (Birth – 2 year olds), Room 117  
5:30 p.m.: Preschool (Age 3-4): Music JAM, Room 115  
6:00 p.m.: Dinner for All (Fellowship Hall)  
6:20 p.m.: Preschool (Age 2-4): Activities, Room 116  
K-2<sup>nd</sup> Grade: Music JAM, Room 115  
3<sup>rd</sup> – 5<sup>th</sup> Grade: Activities, Room 113  
6:30 p.m.: Youth and Adult programs begin  
6:50 p.m.: K-2<sup>nd</sup> Grade: Activities, Room 113  
3<sup>rd</sup> – 5<sup>th</sup> Grade: Music JAM, Room 115  
7:30 p.m.: JAM programs end (parents pick-up children)

### **REGISTRATION**

(See attached form)

1. After filling out a registration form, please pay the registration fee by cash or check made payable to First Presbyterian Church – Wednesday JAM for the amount designated.

2. The registration fees cover teaching materials and meals.

<b>Children (3-12 years)</b>	\$30 for one semester
<b>Adult</b>	\$50 for one semester
<b>Guest</b>	\$3 (children), \$5 (adult)
<b>Family Maximum</b>	\$160 (Semester) or \$16 (Day)

3. Free for children 24 months and younger. Meals are also free for college student volunteers and teachers. Scholarships are available if financial help is needed. You may also request a divided payment plan.

# Presbyterian Campus Ministry

***“Come as you are and be inspired to change.”***

Presbyterian Campus Ministry welcomes undergraduates, graduate, and medical students of all backgrounds (from any school) to all of its activities.

Contact Kerri Mock Hefner for additional information (758-1901, ext. 203 or [hefnerk@ecu.edu](mailto:hefnerk@ecu.edu)). For current schedule of events, visit the Presbyterian Campus Ministry website at [www.ecu.edu/org/pcm](http://www.ecu.edu/org/pcm).

## **Wednesday Night Bible Study**

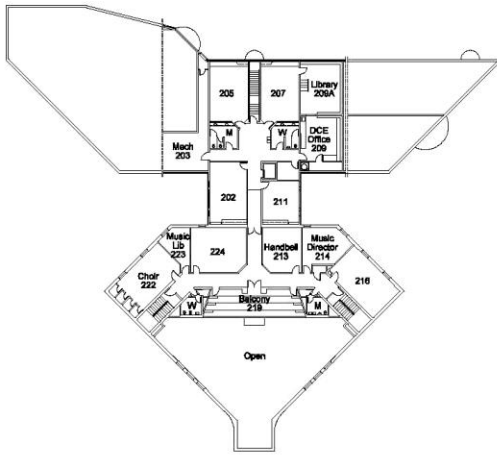
- Begins at 8:00 p.m., in Room B113

## **Thursday Fellowship Night**

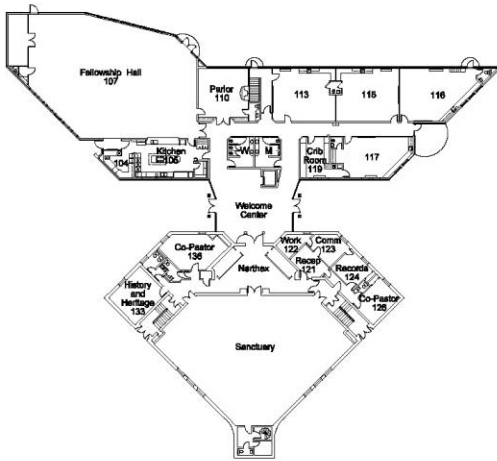
- Begins at 6:00 p.m. at First Presbyterian Church, Basement Fellowship Hall
- **FREE** home-cooked meal, provided by local churches.
- Programs, discussions, fellowship, and prayer.



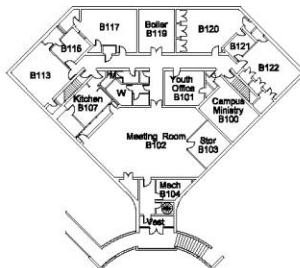
Beach Retreat



**Second Floor**



**Ground Floor**



**Lower Floor**

**Wednesday JAM**  
**Registration Form- Fall 2008**

**\*One Form per Family**

**Name(s):** \_\_\_\_\_

**Date(s) of birth:** \_\_\_\_\_

**Male(s) or female(s):** \_\_\_\_\_ **Grade(s) in school:** \_\_\_\_\_

**School(s) attending:** \_\_\_\_\_

**Name(s) of parents or guardian(s):** \_\_\_\_\_

**Home address:** \_\_\_\_\_

**Home phone:** \_\_\_\_\_ **Work or Cell phone(s):** \_\_\_\_\_

**E-mail address(s):** \_\_\_\_\_

**Emergency contacts and phone number(s):** \_\_\_\_\_

**Any allergies or additional helpful information about your child:**

\_\_\_\_\_

**Authorization for Treatment of a Minor:**

My child/children, named above, has/have my permission to attend special events sponsored by the program meeting at First Presbyterian church in Greenville, NC. In the event of illness or accident, if the parents or guardian cannot be reached, I authorize the church or doctor to render medical aid when and if the occasion makes it necessary.

**Parents or Guardian Signature:** \_\_\_\_\_ **Date:** \_\_\_\_\_

**Scholarship needed:** \_\_\_\_ Yes \_\_\_\_ No

If you have questions or would like to volunteer for JAM, please let us know. Contact church office at 758-1901, [fpcstaff@embarqmail.com](mailto:fpcstaff@embarqmail.com) or Sung Hee Chang at 758-1901 (Ext. 204), [sungheechang@juno.com](mailto:sungheechang@juno.com).

Return registration form with appropriate fee to the church office.